

Ethan Double Wardrobe No Drawers 2 Doors



kwalu®

Ethan Collection

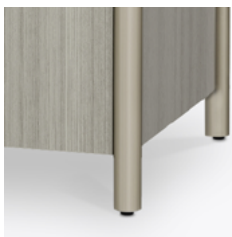
Double Wardrobe
No Drawers 2 Doors

Designed by Brian Graham, the collection seamlessly blends form and function, where minimalist design meets the complex needs of healthcare environments. Its soft edges and understated elegance create a serene, cohesive atmosphere that promotes healing and comfort. The collection offers practical storage solutions, including a wardrobe with a bench, a bench, several bedside tables—one featuring a mobile pouf—chests, and a mobile cart, all intuitively designed for ease of use. The durable Protea™ and Protea Fusion surfaces are engineered to withstand the rigors of healthcare settings, ensuring long-lasting performance.



Model: ETNWR02CL
38.5W 24.25D 72H

Features



Durable Finish

Durable and resilient, Protea™ and Protea™ Fusion deliver the beauty of wood without any of the drawbacks. The finish is moisture impervious, easy to clean, and maintenance-free.



Anti-Tip Kit

An anti-tip device is included to minimize the risk of tip-over and enhance the overall safety of the product.



Door Hinges

Features a 110° opening for easier access and smooth motion.



Clothes Rod

Standard clothing rod may be attached at ADA height of 48" from the floor.



Hardware

Choose from 3 hardware styles exclusive to the Ethan Collection.



Optional Premium Protea Leg

These optional contrasting premium finishes are available for the Ethan Collection legs - Platinum, Soft Gold, Pure Copper and Black.



Other Wardrobe Styles

Ethan wardrobes included a number of Single and Double styles.



10 Year Warranty

We offer a 10 Year Performance Warranty on both construction and finish, so the product is guaranteed to stay looking like new for 10 years.

kwalu®

6160 Peachtree Dunwoody Rd. Building C, Atlanta, GA 30328
1-877-MY-KWALU kwalu.com

CGETNWR02F0924