

Ethan Double Wardrobe 1 Drawer 2 Doors



kwalu®

Ethan Collection

Double Wardrobe
1 Drawer 2 Doors

Designed by Brian Graham, the collection seamlessly blends form and function, where minimalist design meets the complex needs of healthcare environments. Its soft edges and understated elegance create a serene, cohesive atmosphere that promotes healing and comfort. The collection offers practical storage solutions, including a wardrobe with a bench, a bench, several bedside tables—one featuring a mobile pouf—chests, and a mobile cart, all intuitively designed for ease of use. The durable Protea™ and Protea Fusion surfaces are engineered to withstand the rigors of healthcare settings, ensuring long-lasting performance.



Model: ETNWR12CL
38.5W 24.25D 72H

Features



Durable Finish

Durable and resilient, Protea™ and Protea™ Fusion deliver the beauty of wood without any of the drawbacks. The finish is moisture impervious, easy to clean, and maintenance-free.



Anti-Tip Kit

An anti-tip device is included to minimize the risk of tip-over and enhance the overall safety of the product.



Door Hinges

Features a 110° opening for easier access and smooth motion.



Clothes Rod

Standard clothing rod may be attached at ADA height of 48" from the floor.



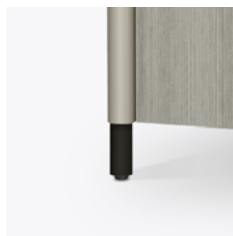
Drawers

All constructed with both dowel and mechanical fasteners for additional strength. Ball bearing removable slides are fully extendable.



Hardware

Choose from 3 hardware styles exclusive to the Ethan Collection.



Optional Premium Protea Leg

These optional contrasting premium finishes are available for the Ethan Collection legs - Platinum, Soft Gold, Pure Copper and Black.



Other Wardrobe Styles

Ethan wardrobes included a number of Single and Double styles.



10 Year Warranty

We offer a 10 Year Performance Warranty on both construction and finish, so the product is guaranteed to stay looking like new for 10 years.

kwalu®

6160 Peachtree Dunwoody Rd. Building C, Atlanta, GA 30328
1-877-MY-KWALU kwalu.com

CGETNWR12F0924