

Ethan Chest 3 Drawers



kwalu®

Ethan Collection

Chest
3 Drawers

Designed by Brian Graham, the collection seamlessly blends form and function, where minimalist design meets the complex needs of healthcare environments. Its soft edges and understated elegance create a serene, cohesive atmosphere that promotes healing and comfort. The collection offers practical storage solutions, including a wardrobe with a bench, a bench, several bedside tables—one featuring a mobile pouf—chests, and a mobile cart, all intuitively designed for ease of use. The durable Protea™ and Protea Fusion surfaces are engineered to withstand the rigors of healthcare settings, ensuring long-lasting performance.



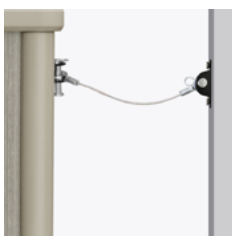
Model: ETNCH30CL
33.5W 21.5D 30.5H

Features



Durable Finish

Durable and resilient, Protea™ and Protea™ Fusion deliver the beauty of wood without any of the drawbacks. The finish is moisture impervious, easy to clean, and maintenance-free.



Anti-Tip Kit

An anti-tip device is included to minimize the risk of tip-over and enhance the overall safety of the product.



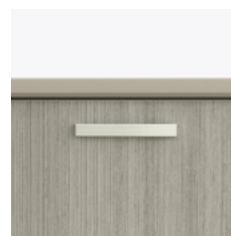
Reverse Quarter Bevel Top Edge

The Reverse Quarter Bevel edge is a distinctive design feature that can be found across the Ethan casegood collection.



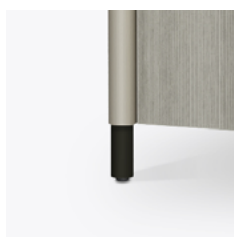
Drawers

All constructed with both dowel and mechanical fasteners for additional strength. Ball bearing removable slides are fully extendable.



Hardware

Choose from 3 hardware styles exclusive to the Ethan Collection.



Optional Premium Protea Leg

These optional contrasting premium finishes are available for the Ethan Collection legs - Platinum, Soft Gold, Pure Copper and Black.



10 Year Warranty

We offer a 10 Year Performance Warranty on both construction and finish, so the product is guaranteed to stay looking like new for 10 years.

kwalu®

6160 Peachtree Dunwoody Rd. Building C, Atlanta, GA 30328
1-877-MY-KWALU kwalu.com

CGETNCH30F0924